

# *LEICA SPRINTER Electronic Level*



***Error-free, Easy, Fast***  
***The New Standard for leveling at a breakthrough price***

***Leica***  
***Geosystems***



# ***With LEICA SPRINTER you become one of the world's fastest levelers...***



## ***Reliable Always reads the staff correctly***

LEICA SPRINTER is a reliable and accurate electronic level that provides error-free measurements. Optical reading is no longer needed. Just let the electronic eye do it! The LEICA SPRINTER bar code automatically determines height and distance. There will be no more misreading and interpretation errors in reading the staff.



## ***Simple keyboard and screen Easy to use***

LEICA SPRINTER is as easy to use as a conventional level with the incredible functionality of an electronic level. You don't even need a manual to get it started. You aim and focus, measure with one key press and the data is displayed almost instantly. The LEICA SPRINTER saves training costs. You will have the shortest possible learning curve.



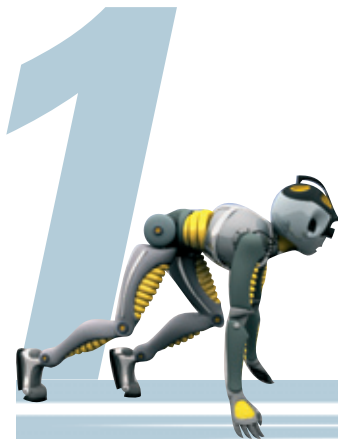
## ***Fast and affordable Great value for money***

Compared to a conventional level, LEICA SPRINTER's effortless, fast (<3 seconds) measurements could save up to 50% of your valuable time. The electronic level enhances your productivity. No more wasting of time and materials for you and your crew. And all this for an incredible price.

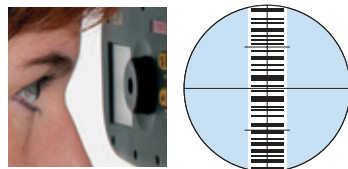


## ***Onboard memory and RS232 interface Easy data management***

With its advanced electronics the LEICA SPRINTER avoids transcription and computation errors. All measurements can be viewed and deleted on board. With LEICA SPRINTER 100M/200M, data can be stored and transferred to an external data collector or your personal computer. The field-to-finish process is greatly simplified.



## ***Aim and focus***



## ***Measure***



***Error-Free – Easy to Use – Fast – Reliable – Robu***





# Join the New Standard



## **Tilt warning sensor Keeps you on the level**

LEICA SPRINTER is designed for users with all skill levels. It includes many error-reducing functions, even recognizing whether the staff is inverted or upright. The in-built tilt sensor prevents the system from measuring if the user operates outside the compensator range. You always measure error-free!



## **Waterproof IPX5 Works when you do**

The LEICA SPRINTER is completely at home on rough and tough construction sites. You can leave it in the sun or out in the rain. It operates in very low light conditions, even with only 20 lux. You can now work under dim streetlights, in tunnels, indoor and even in the dark with a simple torch or flash light. The LEICA SPRINTER performs when you do.

**All leveling –  
any time  
any place**

**You can do it.  
Error-free!**

**Use LEICA SPRINTER to  
accelerate your leveling  
productivity in:**

- Building Construction
- Road Construction
- Civil Engineering
- Topography and Cadastral Applications
- Agriculture
- Architecture
- Landscaping
- Dimensional control
- Mining and Quarrying
- Tunneling
- Anywhere else you need to level error free and fast



## **Result displayed**



**No need to perform any  
calculations. The LEICA  
SPRINTER automatically and  
immediately provides:**

- Reduced levels
- Height differences

**...You can't get that using an  
auto level!**

**And with these added value  
functions, such as**

- Continuous tracking mode
- Inverse Staff measuring mode
- Onboard adjustment program
- Auto Off Power saving mode
- Alpha/numeric input function

**...You profit even more!**

**st – Accurate – Affordable**



## LEICA SPRINTER Performance Overview

Technical Data	LEICA SPRINTER 100/100M	LEICA SPRINTER 200/200M
<b>Height Accuracy</b>	Standard deviation height measurement per 1 km double run (ISO 17123-2)	
Electronic Measurements with LEICA SPRINTER aluminium staff	2.0 mm	1.5 mm
<b>Distance Accuracy</b>	Standard deviation distance measurement	
Electronic Measurements with LEICA SPRINTER aluminium staff	10 mm for $D \leq 10$ m and (Distance in m $\times$ 0.001) for $D > 10$ m	
<b>Range</b>	2 m – 80 m (from 0.5 m – optical)	
<b>Measuring Modes</b>	Single and tracking	
<b>Time for Single Measurement</b>	<3 sec*	
<b>Compensator</b>	Magnetic Damping	
Working Range	$\pm 10'$	
Setting Accuracy	0.8"	
<b>Measuring Programs</b>	Measure, Measure & Record (M version), Staff height and distance, Height difference with RL input, Adjustment	
<b>Data Storage</b>	500 measurements (M version only)	
Internal Memory	GSI format via RS232 (M version only)	
Online Operations		
<b>System Capability</b>	Auto recognition of inverted or normal staff Auto Off battery saving function Units (m/int ft/US ft/8 in) On board Data Management/Handling capability (M version)	
<b>Sensitivity in measuring Environmental Conditions</b>	Visible light, artificial light, dim conditions at 20 lux	
Dust/Water	IP55	
<b>Power Supply</b>	AA dry cells (4xLR6/AA/AM3 1.5 V)	
<b>Weight</b>	<2.5 kg	

\* For range up to 80 m performed under normal light conditions



#### Equipment list:

LEICA SPRINTER	1
Carrying Case	1
Adjusting pin	1
Instruction manual	1
Quick Guide	1
AA size dry cells	4
Measuring Staff	1
RS232 cable (LEICA SPRINTER 100M/200M)	1

#### Optional:

Rechargeable batteries	4
Battery charger	1
Sun shade	1
Tripod	1

## LEICA SPRINTER – The ultimate Electronic Construction Level

### Excellent Service and Support

The LEICA SPRINTER is supported by our world-wide network of Leica service centers and authorized dealers. Service and support is always nearby should you need it. All Leica Geosystems customers can enjoy the reassurance of world class support and service, carried out promptly, by experienced, well-trained personnel.



### Tough construction tools

Leica Geosystems offers complete solutions for the construction market. Total stations, automatic levels, construction lasers, accessories and more. Ask your dealer for more information.

Your Dealer:

GEOOBCHOD  
gen. Svobody 56  
533 51 Pardubice  
  
Tel: 466 644 665  
www.geobchod.cz



**Total Quality Management**  
**Our commitment to total customer satisfaction**

Ask your local Leica Geosystems dealer for more information about our TQM program.

**Leica**  
Geosystems

Leica Geosystems AG  
CH-9435 Heerbrugg  
(Switzerland)  
www.leica-geosystems.com